

## Access Statement – Diglis Island and Fish Pass

### Getting onto the island

There is a drop-off point for cars immediately in front of the island which has an uneven gravel surface.

There are 2 lock gates to cross. The first lock gate has one step each end of it, with a height of 185mm. At its narrowest point, it is 660mm wide. The surface of the walkway is a metal grid.

There is a short walk, via an uneven concrete surface and metal grating, around a tall post. The route is marked out on the floor.

The step to the second lock gate is 205mm high.



*1<sup>st</sup> lock gate*

### The workshop and toilet

There is a concrete path to access the workshop and toilet facilities.



To enter the workshop, there is a gentle concrete slope upwards, followed by a 150cm long ramp, with a gradient of 1:12.

The floor of the workshop is an uneven painted concrete surface. There is historic machinery along the length of the workshop, with obstructions such as vices protruding at about waist height.

There is a disabled accessible toilet adjacent to the workshop.

*Entrance to workshop*

### Weir Viewing Point

Access to the weir viewing point is along a grass pathway, which has a gentle incline over 4.5m, and then a gravel pathway. There is no seating area at the weir viewing point. The noise from the water flowing over the weir can be loud at certain times of the year.



*Route to weir viewing point*

## Access Statement – Diglis Island and Fish Pass

### Route to Fish Pass

The walk to the fish pass and viewing gallery from the drop-off point is via an 830m walk along a tarmac public footpath and bridge, which forms part of the Sustrans network. On each side, the bridge can be accessed either by a gentle slope (as shown) or via 14 steps with a tread height of 145mm. The surface of the bridge is metal with a distinctive pattern. The footpath both sides of the bridge is level and flat.



*Diglis bridge approach*



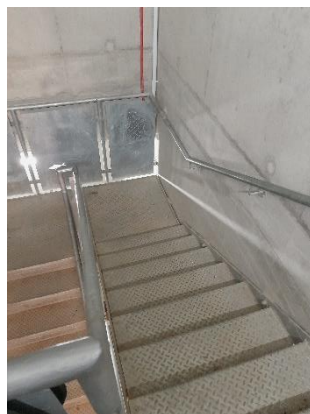
*Diglis bridge*

### Fish Pass Viewing Gallery

### Terrace and

There is a bench at the fish pass terrace.

The width of the door leading into the viewing gallery is 800mm wide. There are 36 steps with four landings and no more than 8 steps in one flight (which are average tread heights of 150mm). The viewing gallery is an enclosed space, below the level of the river with no natural daylight. The only entry and exit is via the staircase.



*Viewing gallery staircase*