



River Voyager Trail



This walk is roughly 3.5 miles long.

Take this trail guide and go on an exciting voyage of discovery! Take in both the history of Gloucester Docks and the nature of Alney Island and the River Severn on this fun journey to the river.

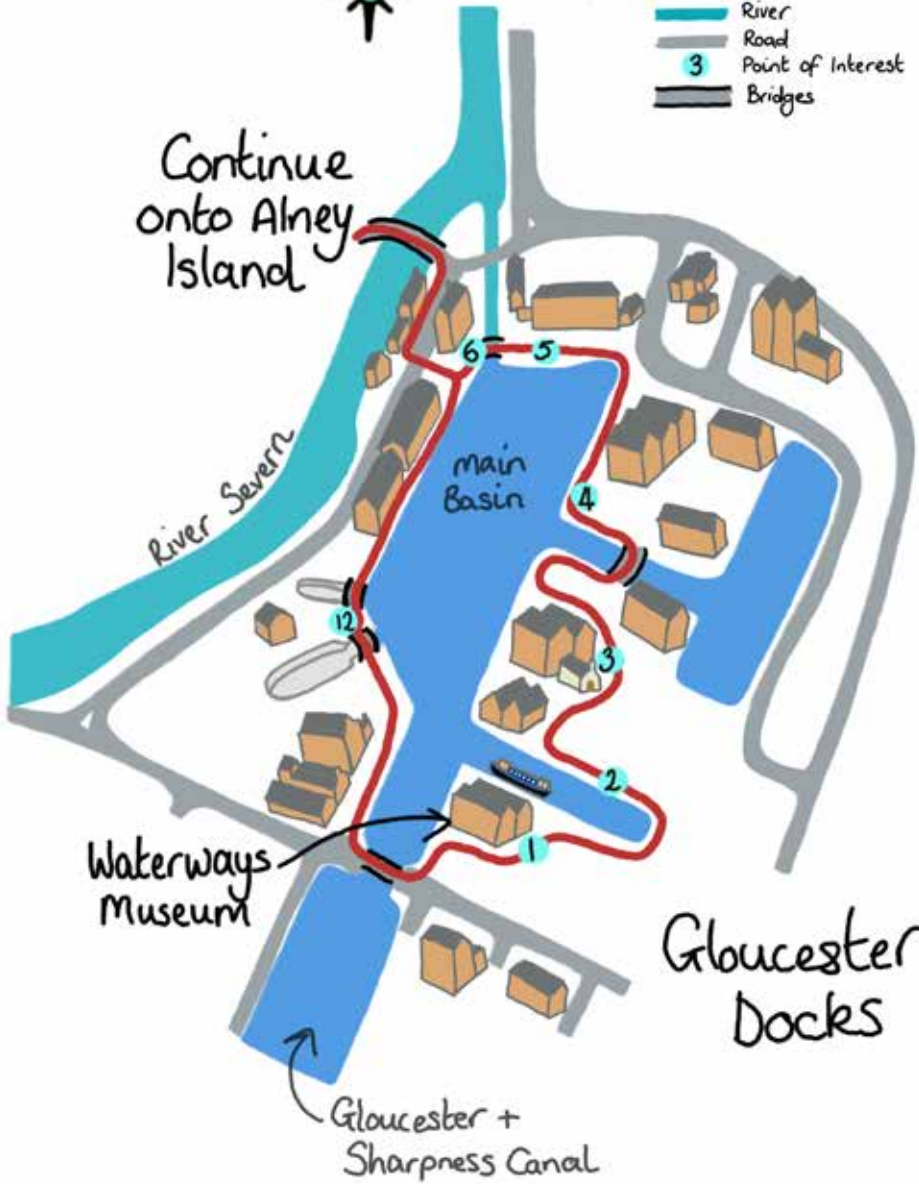
Walk Guidance

- | | |
|---------------------------|--|
| Take care by water | Stay Away From the Edge |
| Share the space | Please be mindful of others.
Keep dogs under control and clean up after them. |
| Stay to footpaths | Beware of cyclists and take care crossing roads |
| Gloucester Docks | There are some narrow points on lock gates and bridges in docks |
| Alney Island | There is some rough terrain so take care, the island can flood so turn back if access is limited |
| COVID | Please abide by the current Government guidance for England |

Gloucester Docks



- Key
- Main Trail
 - Docks
 - River
 - Road
 - 3 Point of Interest
 - Bridges



The Gloucester Docks are at the end of the Gloucester & Sharpness Canal, which was built to allow ships to bypass a difficult and windy stretch of the River Severn

1 Waterways Museum

Start at the National Waterways Museum... The National Waterways Museum tells the story of Britain's waterways and Gloucester Docks! It is housed in a Grade II listed warehouse and has a big collection of historical objects.

2 Sabrina

If you look across the water back towards the Waterways Museum you will see a boat called the Sabrina 5. Sabrina 5 is one of six unpowered barges built in 1944 for carrying 130 – 150 tons of cargo!

3 Mariners Chapel

Opened in 1849, this Eye-catching chapel was frequented by seamen from many nations. In its first 5 years, 2,000 copies of the Bible were distributed! You can read more at the plaque at the side of the chapel.

4 Main Basin

The Main Basin, opened in 1827, was once frequented by large sea-going ships that travelled up the Gloucester and Sharpness Canal in order for cargo to be unloaded and re-loaded onto smaller vessels. How many boats can you spot today?

5 Crane

This crane is a great example of the manually operated cranes used to lift the heaviest cargos, such as stone!

6 Gloucester Lock

Gloucester Lock provides the only access for barges and canal boats between the docks and the River Severn. Originally it was two locks in a staircase! Are there any boats passing through the locks today?

12 Dry Docks

The Dry docks were also known as graving docks and were used to repair visiting vessels. The smaller one was built first, however when larger boats came into service a larger one was needed!

NOTE: Continue the walk onto Alney Island (see map overleaf)

Gloucester Docks is managed by the Canal & River Trust
<https://canalrivertrust.org.uk/>

Alney Island



7 Colours you can see

Take a look around you as you walk, can you spot different colours or are they all different shades of the same colour?

8 Things you can hear

Why not stop in a safe location on the route, close your eyes and listen to your surroundings. If you are walking with your family or friends have a chat about what you hear!

9 Plants you can spot

While you are walking have a look around and see how many plants you can spot, you might not know all their names but how many different types of grasses, trees and flowers can you see?

10 Viewpoints of the River Severn

These points provide beautiful views of the river, if you keep your eyes peeled you might see some wildlife!

11 Over Bridge

Also known as Telford's Bridge, was opened in 1830. It was the lowest practicable crossing point of the river – before the first Severn Suspension Bridge was built at Aust in the 1960s! There is a beautiful view of the river from the top (see photo on front of trail guide).

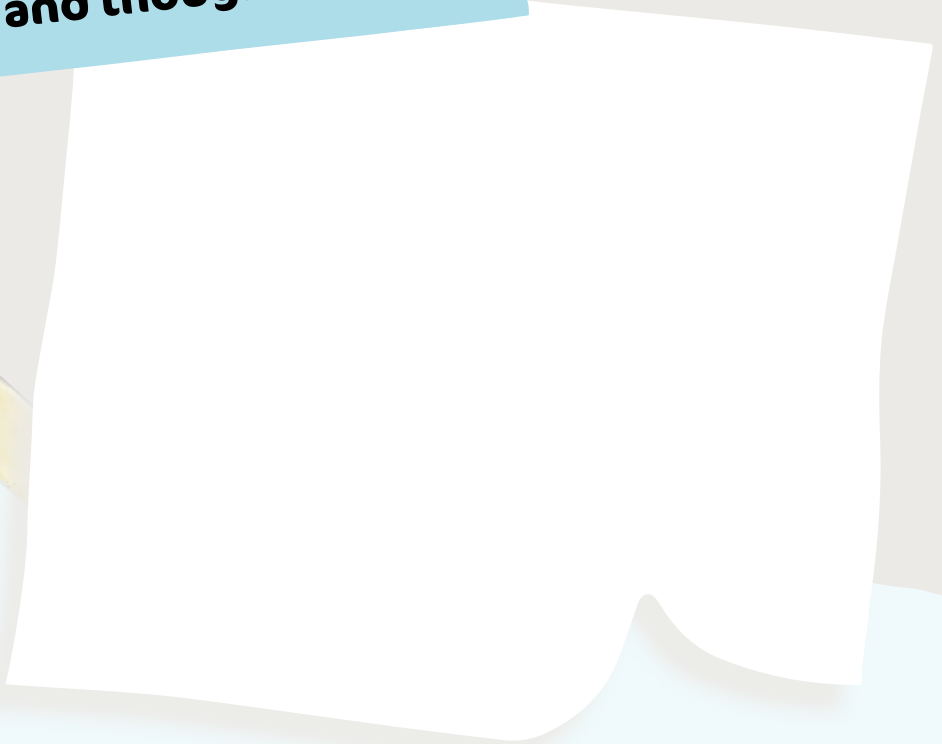
Alney Island is a nature reserve that sits between two branches of the River Severn that is made up of 56 hectares of fields and woodland. For more information visit the website below.

If you have some extra time why not follow the Additional Route back to the docks?

NOTE: Continue the walk back into Gloucester Docks to end at the Waterways Museum (see previous map)

www.friendsofalneyisland.btck.co.uk/

**Write your notes
and thoughts here!**



~~~~~

---

---

---

---

---

---

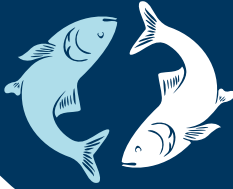
---

---

---

---





# UNLOCKING THE SEVERN

## Project Information

Unlocking the Severn is a once-in-a-lifetime conservation & river-engagement project that will unlock the UK's longest river for people and wildlife.

## Share and WIN!

If you completed this trail as part of the Gloucester History Festival share your photos on social media using **#OurSevern** **#VoyagersAndVisionaries** for the chance to win a nature related prize!

[www.unlockingthesevern.co.uk](http://www.unlockingthesevern.co.uk)  
[@severnunlocked](https://twitter.com/severnunlocked)

